





# CATÁLOGO DE PRODUCTOS CIENCIAS EN LA SALUD

 Tel. (787) 786-4212 | 4425 | 4488  1756 Ave. Fernández Juncos, San Juan P.R. 00909

 [www.betancespse.com](http://www.betancespse.com)  [/betancesprofessional](https://www.facebook.com/betancesprofessional)  [dp@betancespse.com](mailto:dp@betancespse.com)







**Gobierno de Puerto Rico**  
Administración de Servicios Generales  
Registro Único de Licitadores

## CERTIFICADO DE ELEGIBILIDAD

**FECHA DE EXPEDICIÓN**

20 de diciembre de 2022

**NÚMERO DE CERTIFICACIÓN**

202221209

**FECHA DE VENCIMIENTO**

20 de diciembre de 2023

Nombre del Licitador: Betances Professional Services and Equipment, Inc.

Numero de Licitador: 3782

Unique Entity ID (SAM.gov): D2VJMAD4NDH1  
SAM Activo para el licitador

Dirección Postal: 1756 Ave Fernandez Juncos San Juan, PR 00909

Teléfono: (787) 786-4212

Correo Electrónico: contabilidad@betancespse.com

**PERSONAS AUTORIZADAS A FIRMAR**

NOMBRE Y APELLIDOS	TÍTULO QUE OSTENTA
Claudia M. Agudelo Velásquez	Presidente
Carlos A. Agudelo Velásquez	Vice-Presidente
Connie F. Agudelo Rodríguez	Secretaria

Será responsabilidad de cada Agencia Ejecutiva, Corporación Pública o Municipio validar la elegibilidad del licitador antes de adjudicar cualquier procedimiento de adquisición, órdenes de compra u otorgar contratos. Así como el de garantizar que el licitador puede proveer los bienes y servicios no profesionales conforme las normas que lo regulan.

**ADVERTENCIA:** Cualquier alteración anula este certificado y podría ser sancionado criminalmente conforme a las disposiciones aplicables del Código Penal de Puerto Rico



Validación: <https://validacion.pr.gov/>, debe usar el número de certificado como código de validación

RV.20220729

Código  
**BPSB0054**



## Cama de posiciones eléctrica

Descripción:

Classis series intensive care electric bed. Bed frame with abs sleeping platform, abs head & foot board, 2 section side rails with built in controller, nursing control panel, chair position, auto sette, battery back up system, cpr, iv pole and 5" catis brand central locking casters.

Código  
**BPSB5231**

## Camilla de Posiciones

Descripción:

Camilla stainless steel para transporte con espaldar ajustable



## Esfigmomanómetro de pie

Código  
**BPSB1131**



## Banqueta para pies

Código  
**BPSB5320**



## Esfigmomanómetro de pared

Código  
**BPSB1130**



## Lámpara cuello de ganso

Código  
**BPSB1697**



Código  
**BPSB8X01**



## Cuna para bebés recién nacidos

Descripción:

Bassinet stand for baby w/ basket & pad.

Código  
**BPSB85002**



## Cama de examen físico

Descripción:

Treatment Table.

## Dispensador de jabón con bomba de pie para jabón Avagard

Código  
**BPSB0000**



## Porta suero (IV Pole)

Código  
**BPSB7540**



## Mesita para alimentos

Código  
**BPSB5320**



Código  
**BPSB3350**



## Sillón de ruedas

Descripción:

Wheelchair 18" fixed arm swing foot

Código  
**BPSB18600**



## Máquina succión portátil

Descripción:

Suction Machine 23 in HG Heavy Duty.

**CÓDIGO: BPSMHF-01**



Código  
**BPSB5439**



Balanza médica

Báscula médica m

## Balanza Médica Mecánica

Descripción:

Scale floor doctor detector w / height rod

Código  
**BPSMSECA-703**



Báscula médica electrónica

## Balanza Medica Digital

Descripción:

Electronic column scale w/height rod capacity: 500lbs. Lbs/ KG Functions: BMI, Measuring ROD Seca 220 Included.

Código  
**BPSBB130**

## Balanza para niños



Báscula médica electróni

Código  
**BPSBB1**

## Balanza para infantes



Código  
**BPSMHF-01**

## Mesita del cuarto de paciente



## Oxímetro

Código: **BPSB5815**

Código: **BPSB1150**

Código: **BPSB**

Pulseoximeter finger unit

Pulseoximeter pediatric finger unit

Pulseoximeter sensor univ hand held

Código  
**BPSBSR054**



## Carro de paro

Descripción:

Emergency cart 5 drawer w/ accessories  
Disponible tambien modelo  
Craftman

Código  
**BPSB6143**

## Zafacón "Biohazard"

Descripción:

Step on can red or be biohazard 8 gal plastic



## Bomba de alimentación enteral

Código  
**BPS54545**



## Carrito de récords médicos

Código  
**BPS58585**



## Nevera para transporte de laboratorios

Código  
**BPS9093**



Código  
**BPSBSR054**

## Giraffe Warmer



Descripción:

Warmer Dragger Refurbished CS-9011

- Matress with cover
- Tilting bed with rotary
- Examination light
- X-ray cassette tray under matress
- Control modes for air on temperature
- Instant display: set temperature, skin temperature, heat power rate
- Audible visual alarms: temperature deviation, sensor failure, power failure
- Anti-blast quartz infrared tube as radiant heating source.

Código  
**BPSM9012**

## Giraffe Incubator



Descripción:

Airshield Refurbished Incubator C-100

- Denture, upper and lower set
- Denture cup
- Denture brush
- Denture maybe purchased separately

Código  
**BPSC1861**



### Gabinete quirúrgico de materiales limpios con puertas cristal

Descripción:

Fabrication of s/s t-304 ga. 16 floor cabinet 48"x66"x24" deep with side doors with 1/4" lexan, two drawers 6"x24" and two lower s/s solid doors.

Código  
**BPSC1862**



### Gabinete quirúrgico de materiales limpios con puertas cristal

Descripción:

Fabrication of s/s t-304 ga. 16 floor cabinet 48"x66"x24" deep with side by side door with 1/4" translucent lexan and five adjustable shelves.

Código  
**BPSM9012**



### Gabinete quirúrgico de materiales estériles con puertas cristal

Descripción:

Fabrication os s/s t-304 ga. 16 floor cabinet 48"x66"x24" deep in lower section and 12" deep in upper section with two upper door with 1/4"lexan , two drawer 6"x24" two lower s/s solid doors and 12"x48" flat working area.



Tel. (787) 786-4212 | 4425 | 4488



1756 Ave. Fernández Juncos, San Juan P.R. 00909



[www.betancespse.com](http://www.betancespse.com)



[/betancesprofessional](https://www.facebook.com/betancesprofessional)



[dp@betancespse.com](mailto:dp@betancespse.com)



Código  
**BPSC3541**



## Lavamanos quirúrgico de pedal o sensor

Descripción:

Hand sink pedestal mounted base 20" wide x 16" front to back x 8" deep GA. Splash mounted, gooseneck faucet, pedal valve with easy access design basket.

Sábanas de cama Twin de uso industrial para hospital  
100% algodón

Código  
**BPS2311**



Toalla blanca de uso industrial para hospital set de 3

Código  
**BPS2312**



Lavadora  
USO DOMÉSTICO

Código  
**BPS9090**



Secadora  
USO DOMÉSTICO

Código  
**BPS9091**



Nevera de medicamentos

Código  
**BPS9092**



Reloj de Pared

Código  
**BPS9093**



Código:  
**BPSN2011u**

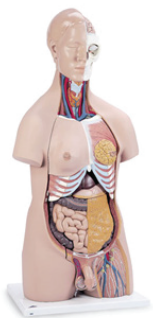


## Human Skeleton

Descripción:

Legs and arms are removable as well as the skull. Mandible hinged with springs, calvarium sectioned to permit study of the cranial vault. The skull has a full set of teeth, This reproduction of a natural skeleton is made up of special plastic which does not deteriorate with age and which is unbreakable. It can be easily washed with soap and water for years of continuous use. 5 ft. 7" tall.

Código:  
**BPSN9920u**



## 20-Part Torso (Torso Anatómico por sistemas)

Descripción:

Removable head (skull and brain exposed on one side, removable eyeball with optic nerve), female breast covering (with skin, musculature, mammary gland and rib junctions), two lungs, two-part heart, stomach, liver with gall bladder, whole intestine system with pancreas and removable cecum flap, front kidney half, female genital insert with removable embryo (three-part), and male genital insert with removable penis (four-part). Parts numbered and key card included. Dimensions: 34" x 15" x 10". Torso teaching guide included.

Código:  
**BPSN1400u**

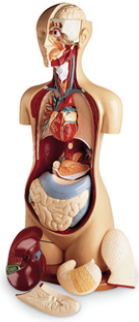


## Muscle Torso - 27 Part

Descripción:

Removable head (skull and brain exposed on one side, removable eyeball with optic nerve), female breast covering (with skin, musculature, mammary gland and rib junctions), two lungs, two-part heart, stomach, liver with gall bladder, whole intestine system with pancreas and removable cecum flap, front kidney half, female genital insert with removable embryo (three-part), and male genital insert with removable penis (four-part). Parts numbered and key card included. Dimensions: 34" x 15" x 10". Torso teaching guide included.

Código:  
**BPSN9111U**



## KnowBody™ Basic Teaching Torso

Descripción:

Exhibiting all basic anatomical details necessary for an introduction to the functional systems of the human body, the life-size Basic KnowBody™ has the following detachable parts: eyeball, brain half (one piece), left lung, right lung (showing pulmonary blood vessels and bronchioles), heart (2 halves), liver with gall bladder and segment of diaphragm, one-piece stomach, one-piece small and large intestine unit, and one-piece torso and head unit. Hand painted with vivid contrasting colors. Exceptionally detailed heart. Stands 37" high; mounted on rigid hardwood base. Includes audio cassette and instructor's answer key. KnowBody™ torsos carry a lifetime guarantee on craftsmanship.

Código:  
**BPSN4912U**



## A-B-C Breast Examination Set - Light

Descripción:

Teaching models available in three different breast (cup) sizes, because all women are not the same. The set includes small (5 oz.), medium (9 oz.), and large (28 oz.) models. Each model contains five lumps which, just as in real life, are more difficult to detect in larger breasts than in the smaller breasts. Each model is washable with soap and water. A must for any comprehensive teaching program. Includes carrying case and slipcovers.

Código:  
**BPSN3528U**



## Trauma Moulage Kit

Descripción:

Can be used with any Rescue manikin, the WMD/CBRNE/ DECON Full-Body Trainer (SB41542U), or the Trauma CPR Manikin (SB23535U, SB32240U). Application of these realistic bleeding moulages to a full-body manikin facilitates quick identification, diagnosis, and dressing of wounds by trainees. Kit includes compound fractures, contusions, lacerations, evisceration, sucking chest wound, impalement, crushed foot, jaw wound, and projectile entry and exit of arm. These bleeding wounds strap on and are complete with pump assembly. Simulated blood is included. Non-bleeding strap-on wounds include 2nd and 3rd degree burns of the chest, back, forearm, and face. Manikin sold separately.



Código:  
**BPSN7937U**



#### Makeup Accessories:

- Broken glass (1)
- Casualty simulation wax (1)
- Coagulant blood (1)
- Grease paint colors: white, blue, brown, and red (1 ea.)
- Methyl cellulose for blood thickening (1)
- Simulated blood powder (3)
- Spirit gum, 1 oz. with brush (3)
- Tongue depressor/spatula combo (1)

## Xtreme Trauma Moulage Kit

#### Descripción:

Represents wounds that result from explosions and chemical disasters. These simulated trauma wounds will assist in training exercises for military and government responders and anyone providing treatment to victims injured in disasters and war.

#### Moulages:

- Bleeding exposed denture avulsion (1)
- Bleeding major muscle laceration (1)
- Bleeding open ankle dislocation (1)
- Bleeding open humerus fracture (1)
- Bleeding open rib fracture (1)
- Bleeding open skull fracture (1)
- Bleeding open wrist fracture (1)
- Bleeding skin laceration (1)
- Burned face (1)
- Dorsal hand 4th degree chemical burn (1)
- Half-face chemical burn (1)
- Right hand 4th degree chemical burn (1)

Código:  
**BPSN0980U**



## Uterus Recession Models

#### Descripción:

Set of four includes one each of normal conditions on the first day, abnormal conditions on the first day, normal conditions on the third day, and normal conditions on the fifth day. For use with Full-Body Pregnancy Simulator (SB50975U).

Código:  
**BPSN1246**



## Demo Dose® Mini Vial, 1 ml - Clear Vial

#### Descripción:

Simulate preparation of intradermal and immunizations with this versatile product. Contains distilled water. For instructional use only. **Not for human or animal use.** Made in the U.S.A.

Código:  
**BPSN253UG**



## Demo Dose® Insulin

Descripción:

Designed to look like the “real” bottle! Each vial includes blank physician order sheets and medication administration record. For instructional use only. Not for human or animal use. Includes one each of the following: 70/30 Insulin, Lispr Insulin, Lantis Insulin, 75/25 Insulin, Regular Insulin (also includes skills checklist for mixing NPH and Regular insulin), and NPH Insulin (also includes skills checklist for mixing NPH and Regular insulin).

Código:  
**BPSN1258**



## Demo Dose® Code Drug II Bundle Complete Set

Descripción:

Bundle includes key products to implement cardiac emergency scenarios. Each syringe contains distilled water. For instructional use only. Not for human or animal use.

Set includes one of each medication listed below:

- Lidocain 2% (5 ml)
- Atropin (10 ml)
- Calc m Chr 10% (10 ml)
- Epinephrn (10 ml)
- Sodium Bicarb 8.4% (50 ml)
- Dextros 50% (50 ml)
- Vasoprssn (1 ml)
- Amiodron (3 ml)
- Furosmide (10 mg/ml)

Código:  
**BPSN237UG**



## Demo Dose® Long-Term Care Medication Cards

Descripción:

Popular oral medications available in a long-term care format. For instructional use only. Not for human or animal use. Includes one each of the following: Digo - 0.25 mg, Lasi - 20 mg, MVit, Fe - 65 mg, Colace - 50 mg, Eryth - 250 mg, Dilat - 100 mg, Lopre - 50 mg, Dyaz - 37.5 mg/25 mg, Cardi - 120 mg, Potassm - 20 mEq, Glucphge-XR - 500 mg, Lipitr - 10 mg, and Wellbutn - 100 mg.

## Code Drug I Bundle Complete Set

Descripción:



Implement cardiac emergency simulations with these syringes of key products. Each syringe is prefilled with distilled water. For instructional use only. Not for human or animal use. Includes one each of the following: Epinephrin, 10 ml; Lidocain, 5 ml; Atropin, 10 ml; Sodium Bicarb, 50 ml; Calc Chlr, 10 ml; and Dextros, 50 ml.

Código:  
**BPSNP4500**



## Medication Administration Kit

Descripción:

Learning the proper way to inject medications, break ampules, and protect yourself and your patient are critical to medication administration.

- (2) Nitrile, powder-free surgical gloves; size: 7.5 (Sterile)
- Exam gloves (Medium; 10/Pack)
- 5 mL Syringe only Luer lock
- BD SafetyGlide (3 mL; 25G x 5/8")
- BD SafetyGlide (3 mL; 23G x 1")
- BD SafetyGlide (3 mL; 22G x 1 1/2")
- BD SafetyGlide TB (1 mL; 25G x 5/8")
- BD SafetyGlide TB (1 mL; 27G x 1/2")
- BD SafetyGlide Insulin (0.3 mL; 29G)
- BD SafetyGlide Insulin (1/2 mL; 29G x 1/2")
- BD SafetyGlide Insulin (1 mL; 29G x 1/2")
- BD SafetyGlide Needle (25G x 5/8")
- BD SafetyGlide Needle (23G x 1")
- BD SafetyGlide Needle (21G x 1")
- Demo Dose® Insulin regular vial 10 mL
- Demo Dose® NPH Insulin vial 10 mL
- (4) Demo Dose® Vial 10 mL
- Demo Dose® Powder for Reconstitution 10 mL
- Demo Dose® 2 mL Clear Ampule
- Demo Dose® 1 mL Clear Ampule
- Demo Dose® Inject-ED Mini
- 4-in-1 Pill Box, Cutter, Cup and Pill Crusher
- Medicine Cup 1 oz. (10/Pack)
- Souffle Medicine Cups (10/Pack)

CONTENTS OF TOTES ARE FOR INSTRUCTIONAL USE ONLY, NOT FOR HUMAN OR ANIMAL USE.



## Demo Dose® Prefilled Syringes with Distilled Water - 10 ml.

Código:  
**BPSNP1087**



Código:  
**BPSN105UG**



## Demo Dose® Medication Labels- Vancomycin, 1g

Descripción:

Real name: Vancomycin. Create your own medications with these economical and versatile labels. Simply peel and stick on the vial, ampule, or bottle. 100 labels per roll. Vial size: 10 ml.

**For instructional use only. Not for human or animal use.**

Código:  
**BPSN10UG**



## Demo Dose® Medication Labels - Ciprofloxacin, 200 mg

Descripción:

Real name: Ciprofloxacin. Create your own medications with these economical and versatile labels. Simply peel and stick on the vial, ampule, or bottle. 100 labels per roll. Vial size: 20 ml. **For instructional use only. Not for human or animal use.**

Código:  
**BPSN23UG**

## Demo Dose® Medication Labels - Indral, 1 mg/ml



Código:  
**BPSB1113**

## Alcohol Pads

Descripción:  
Caja de 200 Medium



Código:  
**BPSB4250**

## Razadoras

Paquete de 50



## Betadine Surgical Scrub



Código: **BPSB1426** Iodine scrub solution gallon

Código: **BPSB1425** Iodine scrub solution 16oz

## Cotton Roll Dispenser

Código:  
**BPSS099**

Descripción:

Top flips back for easy loading.

Sliding drawer dispenses up to four rolls with a single pull. Clear acrylic. Holds approximately 50 rolls.





## Cotton Rolls

Código: **BPSS001** Cotton Rolls Sterile, 16 oz.

Código: **BPSS002** Cotton Rolls Nonsterile, 16 oz.

Código: **BPSS000** Cotton Rolls Sterile, 4 oz.

Código:  
**BPSH3170**

## Algodón

Paquete de 2000



Código:  
**BPSH3139**

## Tourniquetes, Latex-free 1" x 18"

Paquete de 250



Código:  
**BPSB7143**

## Agua Oxigenada

Agua Oxigenada 16oz



## Gazas Estériles



Código: <b>BPSB3362</b>	Gauze pad	2 x 2	box 50
Código: <b>BPSB3363</b>	Gauze pad	3 x 3	box 50
Código: <b>BPSB3254</b>	Gauze pad	4 x 4	pk/200
Código: <b>BPSB3253</b>	Gauze sponge	3 x 3	pk/200
Código: <b>BPSB3252</b>	Gauze sponge	2 x 2	pk/200



## Bandas Adhesivas

Código: <b>BPSB3607</b>	Adhesive bandage spot	7/8	bx/100
Código: <b>BPSB3601</b>	Adhesive bandage sheer	3/4x3	bx/100
Código: <b>BPSB3602</b>	Adhesive bandage sheer	1x3	bx/100
Código: <b>BPSB3614</b>	Adhesive bandage fabric	2x4.5	bx/50



## Isopropyl Alcohol

- Código: **BPSB6499** Alcohol isopropyl 99% Gallon  
Código: **BPSB6470** Alcohol isopropyl 70% Gallon  
Código: **BPSB7016** Alcohol isopropyl 70% 16oz



## Surgical Tape

- Código: **BPSB15270** Surgical tape 1/2"x10yds cs/24  
Código: **BPSH15271** Surgical tape 1"x10yds transpore  
Código: **BPSB15272** Surgical tape plastic 2"x10yds transpore (6)  
Código: **BPSB15273** Surgical tape plastic 3"x10yds transpore (4)  
Código: **BPSB5301** Surgical tape paper 1"x10yds micropore (12)  
Código: **BPSB15302** Surgical tape paper 2"x10yds micropore (6)  
Código: **BPSB15303** Surgical tape paper 3"x10yds micropore (4)  
Código: **BPSB5381** Surgical tape cloth 1"x10yds durapore (12)  
Código: **BPSB15382** Surgical tape cloth 2"x10yds durapore (6)  
Código: **BPSB15383** Surgical tape cloth 3"x10yds durapore (4)

Código:  
**BPSB6061**

## Guantes de Latex

Disponible:  
Small, Medium, Large y  
XLarge Box/100



Código:  
**BPSB2460**

## Guantes estériles para cirugía

Disponible: 6,7,7.5,8,8.5 y 9



Código:  
**BPSB2201**

## Mascarillas

Face mask surgical  
50's (12/ctn)



Código:  
**BPSB695**



## Particulate Respirator /Surgical Mask

Face mask surg  
particulate N95 Bx/35

Código:  
**BPSB2141**



## Batas Amarillas

Exam gown isolation  
yellow Bx/50



## Bata quirúrgica

Código: **BPSB8192**

Surgical gown impervious MD blue 20's

Código: **BPSB8193**

Surgical gown impervious MD blue 20's



## Bata Desechable para Pacientes

Código: **BPSB8101**

Exam Gown 3 plyt/p/t white Dynarex Bx/50

Código: **BPSB2101**

Exam Nurse caps 21" white Bx/100

Código:  
**BPSS1069**



## Shoe Covers

Descripción:

Shoe covers that offer outstanding protection and coverage and the added benefits of non-slip, safe steps. Designed to fit shoe sizes up to men's 13C with comfortable, snug coverage. 150 pairs per case. Disposable.



Código:  
**BPSB1020BK**

## Estetoscopio

Estetoscopio dual head black

Código:  
**BPSB2750**



## Pinzas, Tijeras, Hemostatos, etc

I-magil forceps pediatric

Código:  
**BPSB0316**

I- Dressing forcep serrated 4.5



Código:  
**BPSBF7=7=**

I-scissor utility cut shears 7.5 colors



Código:  
**BPSB0106**

I- Operating scissors CVD s/s 4.5



Código:  
**BPSB0134**

**I-Scissor Iris Straight 3.5**



Código:  
**BPSB0135**

**I-Iris scissors curved 3.5**



Código:  
**BPSB0287**

**I- Mayo Hegar ndl holder 6"**



Código:  
**BPSB1555**

**I-Umbilical scissor 4"**



Código:  
**BPSS6242**

**Splinter Forceps 3-1/2"**



Código:  
**BPSS6038**

**Halstead Mosquito  
Forceps - 5"**



Código:  
**BPSS6231**

**Kelly Forceps Curved 5-1/2"**

**Fine Point Splinter  
Forceps 4-1/2"**



Features:

- Splinter Forceps
- Constructed of stainless steel
- Fine point removes even the smallest foreign body
- Curved texture helps provide a secure grip





Código:  
**BPSS6049**

**Carmalt Forceps-Offset, 4-1/4"**



Código:  
**BPSS6055**

**Tissue Forceps - 5-1/2"**



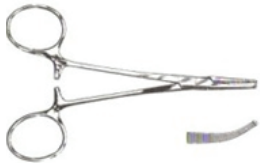
Código:  
**BPSS6052**

**Tongue Seizing Forceps - 6-1/4"**



Código:  
**BPSS6117**

**Halstead Mosquito Forceps Curved**



Código:  
**BPSS6265**

**McGill Catheter Forceps - 9-3/4"**



Código:  
**BPSS6180**

**Lister Bandage Scissors 4-1/2"**



**Carmalt Forceps-Offset, 4-1/4"**



Código: **BPSS6057**

Utility Forceps, Curved - 8"

Código: **BPSS6056**

Utility Forceps, Straight - 8"

Código:  
**BPSS6222**

**Lister Bandage Scissors 4-1/2"**



Código:  
**BPSS6288**

**Lister Bandage Scissors 4-1/2"**



**Bandas Elásticas**

Código: **BPSB3662** Elastic Bandage 2"x5yds

Código: **BPSB3663** Elastic Bandage 3"x5 Yds

Código: **BPSB3664** Elastic Bandage 4"x5 Yds

Código: **BPSB3666** Elastic Bandage 6"x5yds



## Bandas de Gaza

- Código: **BPSB3112** Gauze Bandage stretch 2" Bx/12  
Código: **BPSB3114** Gauze Bandage stretch 3" Bx/12  
Código: **BPSB3114** Gauze Bandage stretch 3" Bx/12  
Código: **BPSB3116** Gauze Bandage stretch 6" Bx/12

Código:  
**BPSB7210**



## Agujas de Venopunción

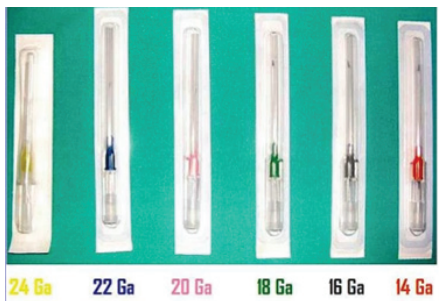
Descripción:  
Blood col needle 22x1 Tamaños  
20, 21 y 22 Caja de 100

Código:  
**BPSB1324**

## Solución IV



**BPSB1132**



## Angios de canalización IV

Descripción:  
IV Catheter 20x1.1/4 Retail 50's  
Tamaños 14,16,18,20,22 y 24  
Box 50

Código  
**BPSB6419**

## Líneas de IV



Descripción:  
IV Set solutions interlink  
macro



## Tubos de muestra de sangre

Código: **BPSB7812** Blood col tube 4ml red plst pk

Código: **BPSB7815** Blood col tube 6ml red plst #456089 vacuette

Código: **BPSB3083** Blood col tube 2.7ml blue citrate plst pk 100

Código: **BPSB7861** Blood col tube 4ml lav. Plst pk 100

Código: **BPSB7856** Blood col tube 3ml lav plus pk 100

Código:  
**BPSB5195**



## Agujas

Descripción:

Hypodermic needle 18x1 bx/100 Nipro Agujas: 18, 20, 21, 22, 23, 25, 27g x 1 & 1 1/2



## Jeringuillas

Código: **BPSB0003** Jeringa w/ needle 03cc Nipro cs/100

Código: **BPSS0005** Jeringa w/ needle 05cc Nipro cs/100

Código: **BPSB0010** Jeringa w/ needle 10cc Nipro cs/100

Código: **BPSB0020** Jeringa w/ needle 10 cc Nipro cs/ 50

Código: **BPSB9602** Jeringa tuberculin 1cc w/ndl cs/100

Código: **BPSB3138** Jeringa w/ndl 03cc 21x1-1/2 cs/100

Código: **BPSB5238** Jeringa w/ndl 05cc 22x1-1/2 Nipro cs/100

Código: **BPSB1238** Jeringa w/ndl 10cc 22x1-1/2 Nipro cs/100

Código:  
**BPSB4893**



## Vacuntainer

Blood col tube holder (250's)

## Mariposa IV



Código: **BPSB7255**

Blood col set 21gx3/4  
safety cs/50

Código: **BPSB7283**

Blood col set 23gx3/4  
safety cs/50

Código  
**BPSB2512**

## Sonda urinaria (sola)



Descripción:

Foley cath 12fr 5ccc  
latex 2way (10's)

Tamaños:

8,12,14,16,18,20,22,  
24,26,28 y 30

## Sonda urinaria (sola)



Descripción:

Foley cath 12fr 5ccc  
latex 2way (10's) Tamaños:

8,12,14,16,18,20,22,24,26,28 y 30

## Sonda urinaria (sola)

Descripción:  
Urethral catheterization  
tray 14 fr (20's)



Código  
**BPSB8471**

## Sonda de enema

Descripción:

Enema administration set



Código  
**BPSB4035**

## Esfigmomanómetro análogo

Descripción:

Sphygno aneroid  
Labstar adult cuff



Código:  
**BPSB1133**

## Esfigmomanómetro Digital

Descripción:

Sphygno Blood auto  
Digi w/adult cuff



## Condom Foley

Código: **BPSB7250**

Male ext cath medium  
gizmo

Código: **BPSB6400**

Male ext cath clear  
adv large



Tel. (787) 786-4212 | 4425 | 4488



1756 Ave. Fernández Juncos, San Juan P.R. 00909



[www.betancespse.com](http://www.betancespse.com)



[/betancesprofessional](https://www.facebook.com/betancesprofessional)



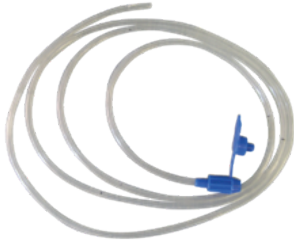
[dp@betancespse.com](mailto:dp@betancespse.com)



Código  
**BPSB1508**

## Tubo o sonda nasogástrico

Descripción:  
Stomach feeding tube 08fr (50's)  
Tamaños: 8,10,12,14,16 y 18



Código  
**BPSB5001**

## Termómetro Digital

Descripción:  
Thermometer Digital  
oral 60 seconds Veridian



Código:  
**BPSB4601**

## Kit de cuidado de traqueotomía

Descripción:  
Tracheostomy care  
kit tray Dynarex (20's)



Código  
**BPSH9002**

## Kit de rasurado

Descripción:  
Shave prep tray (50's)



Código  
**BPSB50000**

## Umbilical Clamp



Código  
**BPSC3542**

## Carro para transporte de materiales

Descripción:  
s/s utilities cart 48" long x  
40" high x 24" deep with caster, two  
drawers and shelf.



## Sharp Container

Código: **BPSB4801**

Sharp container 1 Gal small

Código: **BPSB4802**

Sharp container 2 gal

Código: **BPSB4804**

Sharp container 4 gal

Código: **BPSB4808**

Sharp container 8 gal XL

Código: **BPSB4811**

Sharp container 11 gal XXL



Tel. (787) 786-4212 | 4425 | 4488



1756 Ave. Fernández Juncos, San Juan P.R. 00909



[www.betancespse.com](http://www.betancespse.com)



[/betancesprofessional](https://www.facebook.com/betancesprofessional)



[dp@betancespse.com](mailto:dp@betancespse.com)

Código  
**BPSN6100U**



## CPR Prompt® Training and Practice Manikin - TPAK 100 Adult/Child 5-Pack

### Descripción:

Professional-quality manikins at a fraction of the cost! Comprehensive design allows for practice of Heimlich maneuver and abdominal thrusts, as well as CPR and mouth-to-mouth breathing. Realistic anatomical markings (Adam's apple, carotid arteries, navel, rib cage, chest notch) make it easy to learn correct hand placement for checking pulse, performing chest compressions, and more.

Provides valuable student feedback and other important features:

- Head tilt/chin lift required to open airway
- Proper anatomical landmarks
- Audible compression "clicker" to ensure proper technique.

Ideal for group training - allows each student to have their own manikin for maximum practice time. Easy-to-clean heads are dishwasher safe and can easily be sanitized. Lung bags are replaceable. Designed to meet American Heart Association criteria for desirable manikin features. With age selector dial that adjusts chest compression piston for learning adult or child techniques. Each set is packed in a rugged nylon carrying case with a supply of 50 face-shield lung bags and an insertion tool. Five-year warranty.

Note: When using foam-bodied manikins for AED training, use only pads designed for foam bodies.

Código  
**BPSN6012U**



## CPR Prompt® TMAN 2T Infant Manikin Tan Torso

### Descripción:

- This manikin makes it affordable to provide every student with a manikin for training in CPR, AED use, and the Heimlich maneuver
- The manikin's unique design is not only durable enough to withstand the equivalent of 10,000 student usages, but its tough, yet soft foam-based construction makes the manikin extremely lightweight and portable
- Provides student feedback and other important features
- Head tilt/chin lift required to open airway
- Proper anatomical landmarks
- Removable chest plate • visible="" chest="" rise
- Realistic skin-like finish that is tough enough to withstand the repeated use of AED trainer pads
- Even cleaning and set-up time is a snap with the unique single-use face shield lung bags
- Includes 10 face-shield lung bags and insertion tool, assembly instructions, and cardboard carrying case with handle
- Five-year warranty

Note: When using foam-bodied manikins for AED training, use only pads designed for foam bodies.

Código  
**BPSN1034U**



## Resusci® Baby CPR Manikin

Descripción:

The most realistic and convenient infant CPR training manikin available. Head tilt/chin lift is required to open the airway. Brachial pulse simulation. Economical, disposable airways for quick and easy cleanup. Removable, reusable faces. Comes with three faces, six airways, six manikin wipes, pulse bulb, tubing, and a plastic carry case. **While quantities last.**

Código  
**BPSN2228U**



## Brad™ Compact CPR Training Manikin with Electronics

Descripción:

This economical CPR manikin is constructed of soft, realistic vinyl plastic over polyurethane foam for a "human" feel. Features include a longer torso for realistic abdominal thrusts, realistic head tilt and chin lift for opening airway, can easily be manipulated to realistically simulate airway obstruction or choking situations, and a user-friendly lung/airway design that eliminates cleaning. Includes three mouth/nose pieces and three disposable lung/airway systems. Comes with an exterior console box that indicates proper hand position, adequate chest compressions, and adequate air volume Nylon carry bag and kneeling pads included. Size: 28" x 18" x 10". Three-year warranty.

Código  
**BPSN9922U**



## Kyle™ 3-Year-Old CPR Manikin - Light

Descripción:

This economical manikin realistically portrays a 3-year-old child for instruction of CPR techniques. This lightweight manikin is foam-filled with no internal parts to break. Features an airway cutoff, individual mouth/nosepieces, and a completely disposable airway system with a nonbreathing valve. Carrying bag included. Three-year warranty.



Tel. (787) 786-4212 | 4425 | 4488



1756 Ave. Fernández Juncos, San Juan P.R. 00909



[www.betancespse.com](http://www.betancespse.com)



[/betancesprofessional](https://www.facebook.com/betancesprofessional)



[dp@betancespse.com](mailto:dp@betancespse.com)

Código  
**BPSN2068U**



## CPR Timmy™ Without Electronics

Descripción:

This child CPR manikin can be filled with water to approximate the same weight and "feel" as a real child of corresponding size. Realistic rise and fall of the chest is provided when air enters under the chest overlay. The torso features lifelike rib cage, sternum, xiphoid process, and suprasternal notch to help train effective compression technique. The manikin is designed to sink when filled with water and placed in a pool, and is ideal for water rescue and in-water CPR practice. The manikin is ruggedly designed for effective flow-through cleaning and sanitizing without disassembly. A simulated 3-year-old child complete with three nonbreathing valves, 12 disposable lungs, and nylon carrying bag. Clothing and bag - Fabric U.S.A. Three-year warranty.

Código  
**BPSN6700U**



## TPAK 700 CPR Prompt® 7-Pack

Descripción:

Professional-quality manikin at a fraction of the cost! Comprehensive design allows for practice of Heimlich maneuver and abdominal thrusts, as well as CPR and mouth-to-mouth breathing. Realistic anatomical markings (Adam's apple, carotid arteries, navel, rib cage, chest notch) make it easy to learn correct hand placement for checking pulse, performing chest compressions, and more.

Provides valuable student feedback and other important features:

- Head tilt/chin lift required to open airway
- Proper anatomical landmarks
- Audible compression "clicker" to ensure proper technique.

Ideal for group training - allows each student to have their own manikin for maximum practice time. Easy-to-clean heads are dishwasher safe and can easily be sanitized. Lung bags are replaceable. Designed to meet American Heart Association criteria for desirable manikin features.

Economical package of seven CPR Prompt® manikins includes five adult/child manikins, two infant manikins, 50 adult/child face shield/lung bags, 20 infant face shield/lung bags, and nylon carry case. Five-year warranty.

Código  
**BPSN2878U**



## NOELLE® Maternal and Neonatal Birthing Simulator

Descripción:

Designed to provide a complete birthing experience before, during, and after delivery. Simulator features include full-size articulating female manikin, intubatable airway with chest rise, IV arm for meds/fluids, removable stomach cover, practice Leopold maneuvers, multiple fetal heart sounds, automatic birthing system, measure head descent and cervical dilation, multiple placenta locations, replaceable dilating cervixes, one articulating birthing baby with placenta, and one resuscitation baby with intubatable airway and umbilical catheter site. Also contains new postpartum hemorrhage and palpation module.

Comes with two umbilical cords, two dilating cervixes, two vulva inserts, powder, water-soluble silicone lubricant, training guide, and carry bag. three vulva for postpartum suturing, two umbilical clamps, talcum



Tel. (787) 786-4212 | 4425 | 4488



1756 Ave. Fernández Juncos, San Juan P.R. 00909



[www.betancespse.com](http://www.betancespse.com)



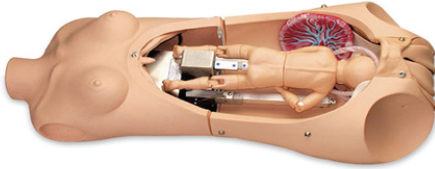
[/betancesprofessional](https://www.facebook.com/betancesprofessional)



[dp@betancespse.com](mailto:dp@betancespse.com)



Código  
**BPSN7714U**



## NOELLE® Birthing Torso

### Descripción:

An economical simulator for those programs dedicated to practicing all facets of childbirth. This full-size upper and lower female torso comes with removable stomach cover and one articulating birthing baby with umbilical cord and placenta. The automatic birthing system rotates baby as it moves through the birth canal. Allows you to listen to fetal heart sounds, measure head descent, and cervical dilation. Features multiple placenta positions. Replaceable dilating cervixes, practice on postpartum suturing on vulval inserts, and practice of Leopold Maneuvers. The torso comes with two umbilical cords, two dilating cervixes, two umbilical clamps, two vulva inserts, three vulva for postpartum suturing, talcum powder, water soluble silicone lubricant, teaching guide, training guide, and soft carry bag.

Código  
**BPSN2438U**



## Advanced Childbirth Simulator

### Descripción:

A total simulator for demonstration of all standard obstetrical procedures:

- Fetal Palpation
- Breech Birth
- Normal Birth
- C-Section Delivery
- Episiotomy
- Vertex Presentation
- Prolapse of Umbilical cord

Features include a removable diaphragm end plate and removable stomach cover for manual positioning of fetus; life-size pelvic cavity with all major anatomical landmarks; ultra-soft vulval insert for episiotomy exercises; simulated dorsosacral position for realistic delivery technique. Cannot do the Leopold procedure on this simulator. Forceps can be used during simulation. All parts in this simulator are replaceable. The Advanced Childbirth Simulator with vinyl skin includes two fetal babies with umbilical cords and placentas, spare stomach cover, two vulva inserts, four spare umbilical cords, two umbilical clamps, talcum powder, instruction manual, and soft carrying bag.

Código  
**BPSN5999U**



## Deluxe Nurse Training Baby - Newborn

### Descripción:

This advanced and incredibly realistic model features internal organs (heart, lung, intestine system, stomach, and bladder), a removable belly covering, interchangeable genital organs, soft ears, and fully movable head, arms, and legs. It allows students to practice both basic and medical infant care such as tracheostomy care, male and female catheterization, insertion of stomach tube, and enema insertion, as well as femoral and gluteal intramuscular and subcutaneous injections. The fontanels can be palpated. Additionally, this model allows practice in dressing; changing; feeding simulation; navel care; mouth, ear, and nose cleaning; insertion of a rectal thermometer; and proper carrying techniques. Baby is 20-1/2" long and weighs 6.63 lbs. Includes syringe, suction catheter, feeding tube, urinary catheter, urine collection bag, catheter lubricant, and a carrying bag.



Tel. (787) 786-4212 | 4425 | 4488



1756 Ave. Fernández Juncos, San Juan P.R. 00909



[www.betancespse.com](http://www.betancespse.com)



[/betancesprofessional](https://www.facebook.com/betancesprofessional)



[dp@betancespse.com](mailto:dp@betancespse.com)

Código  
**BPSN1400U**



## Life/form® Newborn Nursing Skills and ALS Simulator

### Descripción:

Use for meeting objectives of the Neonatal Resuscitation Program's course curriculum

Newborn size: 19" L (crown to heel), 7-1/2-lb. weight, 14-1/2" head circumference

Includes simulator, replaceable airway (2), bilateral lung, collapsed lung, functional (patent) umbilicus, omphalocele, myelomeningocele, hand skins (2), foot skins (2), vein system for hand, vein system for foot, 500 ml fluid supply bag (2), 3 cc syringe with needle, 25 gauge infusion butterfly needle, 25 ml syringe, artificial blood powder, lubricant, baby powder, and hard carry case  
5-year warranty

### Airway, Breathing, and Ventilation

- Anatomical landmarks
- Auscultation of lung sounds during ventilation
- Bilateral lung expansion with visually dramatic chest rise
- ET tube insertion
- Manually control rate and depth of respiration
- Positive pressure ventilation
- Realistic chest compressions
- Sellick maneuver
- Unilateral chest movement option (collapsed lung and mainstem intubation)

### Birth Anomalies

- Neural tube defect (Myelomeningocele) easily attaches to the back
- Omphalocele

### Chest Tube

- Practice chest tube insertion and care of the chest tube area

### Cleaning and Diaper Changing

- Practice cleaning, bathing, and diaper changing
- Waterproof and completely immersible

### Gastrointestinal (GI)

- Accepts a OG/NG tube for practicing tube feeding and suctioning

### Monitoring

- Various monitors, sensors, and electrodes may be attached and connected

### Observation and Measurement

- Observe and measure each part of the body (head, umbilicus, skin, etc.)

### Scenarios

- Build your own high-risk delivery, emergency, transport, and NICU scenarios

### Skin

- Delicate appearance and texture of real skin
- Soft, durable lifelike skin

### Suction

- Practice suctioning nose, oral cavity, and stomach

### Umbilicus

- Can be attached and detached easily
- Made of soft, realistic material
- Practice blood withdrawal or infuse fluids
- Patent umbilicus with venous and arterial access

### Venous Access

- Accepts IV catheter or butterfly infusion needle
- IV hand and foot with realistic flashback from pressurized system
- Soft, lifelike skins with small lumen tubing for realistic practice

Código  
**BPSN1065U**



## Life/form® Stump Bandaging Simulators - Set of 2

### Descripción:

Practice and demonstrate standard bandaging procedures. The lower torso is long enough to allow carrying the bandage around the body over the uninvolved hip at the level of the iliac crest. (NOTE: There is no embedded, palpable skeletal material.) Both the upper and lower portions can be used to demonstrate the attachment of prosthetic devices. The upper torso includes the two arms - one is amputated above the elbow; the other above the wrist. Both arms are slightly extended in a patient-like position to facilitate bandaging. The compressibility of the material very closely duplicates actual experience with a patient. The lower torso is representative of a patient in a supine position with legs slightly abducted. One leg is amputated below the knee; the other at mid-thigh. Includes instruction manuals. Individually boxed. Size of upper stump: 26" x 18" x 13". Size of lower stump: 35" x 15" x 10". Five-year warranty.

Código  
**BPSN0980U**



## Life/form® Advanced Breast Exam Simulator

### Descripción:

Breast cancer is the second leading cause of cancer death among women; a properly performed manual examination is an important way of detecting cancer at an early, more treatable, stage. The Life/form® Advanced Breast Exam Simulator offers unparalleled realism for teaching both clinical and self-breast examination. Unlike other simulators, tissue density actually varies within the simulated breast, just as it does in a live patient. Tumors of varying sizes (1-4 cm diameter), shapes (round, oval, irregular/stellate), and densities can be inserted by the instructor for an expanded combination of training scenarios. Tumors represent adenomas, cysts, malignant tumors, and enlarged lymph nodes. The torso is correctly positioned in the supine position and allows access to both axillae. The trainer features palpable ribs, sternum and clavicles, and enlarged lymph nodes in the axillary and subclavicular areas. Peau d'orange ("orange peel skin") with inflammation, inverted nipple, skin dimpling, and asymmetry are also depicted on the incredibly realistic skin. The Life/form® Advanced Breast Exam Simulator has been designed for supine examination, but may also be used standing upright if desired. Training may also be done without the overlay skin. Includes a rigid underbody, right and left breast inserts, overlay skin, three tumor sets (27 lumps), nine soft lumps to represent soft breast tissue, one hard lump to represent chestwall infiltration, baby powder, hard carrying case, and instruction manual. Torso size: 14" W x 11" H x 6" D. Five-year warranty.

Código  
**BPSN1035U**



## Life/form® Infant Male and Female Catheterization Trainer

### Descripción:

The Life/form® Infant Male and Female Catheterization Trainer is an inexpensive 2-in-1 trainer that provides realistic practice of this difficult skills procedure.

- Practice insertion, position, catheter balloon inflation and deflation
- Feel resistance and pressure as with a real patient
- Urine flows when catheter is in proper position
- Practice both male and female infant catheterization training
- Anatomically realistic with both male and female genitals
- Genitals made of soft, lifelike material
- Replaceable male and female genitals
- Lower half of infant only

Includes: infant manikin, one male and one female genital insert, 2 oz. lubricant, infant Foley catheter, and instruction manual. Five-year warranty.

Código  
**BPSN0957**



## Life/form® Enema Administration Simulator

You will appreciate the convenience of having the Life/form® Enema Administration Simulator to teach enema procedures. Use it for group demonstrations and practice sessions of any size. Each student can realistically practice administering an enema using this lifelike model. The standard enema procedures can be performed using conventional enema apparatus - no special equipment is required. All aspects of the simulator are realistic in every detail. The upper buttock is flexible so that the trainee must raise the buttock in order to locate and make insertion into the anus. The simulator is portable and easy to use. A drain tube is provided so that the fluid can be drained directly into a large container or sink, for continuous use. Includes a hard carrying case, enema administration set, and teaching guide. Fluid supply stand not included. Five-year warranty. Size: 18 in. x 18 in. x 12 in.



Tel. (787) 786-4212 | 4425 | 4488



1756 Ave. Fernández Juncos, San Juan P.R. 00909



[www.betancespse.com](http://www.betancespse.com)



[/betancesprofessional](https://www.facebook.com/betancesprofessional)



[dp@betancespse.com](mailto:dp@betancespse.com)

Código  
**BPSN0857U**



## Male & Female Life/form® Catheterization Simulator Set

### Descripción:

Catheterization is one of the basic skills all nursing students must learn, and to learn the techniques, they must practice. Any patient volunteers? Not likely! But Life/form® simulators allow demonstration and practice in urinary catheterization without embarrassment or discomfort to the patient or the students. In addition, catheterization simulators are useful for anatomical identification and demonstration of perineal care. The realism of Nasco Life/form® Catheterization Simulators will help your students bridge the gap, from classroom to bedside, with ease and comfort. Life/form® simulators have a Five-year warranty.

\*NOTE: A 16 Fr. Silicone Foley catheter can be used if extreme care is taken to inflate the cuff only when it is in the proper position. Just as in a real patient, the cuff must be completely deflated before the catheter is removed. Improper use of a Foley can result in damage to the simulator, just as when using a Foley catheter with a real patient.

Código  
**BPSN1035U**



## Life/form® Prostate Examination Simulator

### Descripción:

The Prostate Examination Simulator is an indispensable model for both students and professionals. Instructors have the ability to teach techniques of prostate examination with no harm or embarrassment to real patients. Now every student can learn to detect beginning stages of prostate cancer and increase chances of patient survival. Four separate prostate glands are supplied with the torso, representing one benign gland and three stages of prostatic carcinoma in varying degrees of development. Each gland can be inserted into the prostate torso to allow realistic practice in diagnosis by rectal palpation.

STAGE A GLAND - Benign, slightly enlarged, but otherwise normal prostate gland.

STAGE B GLAND - A discrete, hard nodule is palpable in the upper right quadrant. This simulates a beginning stage of carcinoma.

STAGE C GLAND - The spread of carcinoma is demonstrated in this gland. The small nodule has increased in size and has become an external hard mass on the surface of the gland.

STAGE D GLAND - This gland is totally replaced with carcinoma. The entire gland will feel hard and irregular.

Life/form® Prostate Examination Simulator is complete with four glands, hard carrying case, lubricant, and teaching guide. Five-year warranty. Size: 22" W x 15" D x 12" H.

Código  
**BPSN0990U**



## Feces Removal and Glycerin Enema Training Model

### Descripción:

Practice removing feces and giving a glycerin enema with the same feeling and realism as with a human body. For feces removal, students place the simulated feces into the intestine for removal from the anus with proper technique. Glycerin fluid can be injected to practice performing a glycerin enema. A drainage tube at the side of the abdomen allows the fluid to be removed at the end of the simulation. By opening the abdominal cover, the position of the enema's end can be confirmed through transparent intestines, allowing the instructor to confidently guide the student through the process while observing technique. Includes enema, drainage tube, intestine cap, sheet with base, simulated feces set (one each of soft and hard), and storage bag. 13" L x 21-5/8" W x 13-3/4" H.



Código  
**BPSN2171**



## Laerdal® Nursing Kelly SimPad® Capable

Nursing Kelly is a manikin designed for scenario-based training of the care and management of a wide variety of in-hospital patients. Training includes blood pressure measurement, sounds auscultation, and wound care assessment and management. This full-body adult male manikin is perfect for beginning education for in-hospital healthcare professionals.

### Benefits:

- Educationally effective for in-hospital training, targeting key skills of hospital care providers
- Economical and educationally efficient skills and scenario based trainer develops critical thinking by allowing students to perform assessments and interventions
- Durable, rugged, and lifelike, made to withstand years of use
- Flexible manikin platform allows multiple accessory modules to be added for use in multiple clinical settings

### Features:

- Head with anatomical landmarks, trachea and esophagus, along with simulated lungs and stomach for the practice of many procedures, including NG, OG, tracheal care, and suctioning
- Instructor-controlled blood pressure arm allows for realistic palpation and auscultation
- IV cannulation, medication administration, and site care and maintenance are allowed in the antecubital area and the dorsum of the hand, accessing the median, basilic, and cephalic veins
- Practice medication dose calculations and administration through intramuscular injections at the deltoid, gluteal, ventrogluteal, and thigh sites
- Wound modules can be added (sold separately) to create realistic scenarios for wound assessment and care
- Male and female catheterization.

Código  
**BPSN6004**



## Simulaids® SMART STAT Trauma Overlay Flash Moulage

- Cost-effective, advanced trauma overlay
- Ideal for training staff to manage trauma stabilization
- Design of overlay has the added advantage of utilizing the internal bleeding system already present on the SMART STAT
- Rugged moulage system can be further enhanced with the addition of the Xtreme Trauma Bleeding Arm (101-481) and Xtreme Trauma Bleeding Leg (101-482) for maximization of any extreme trauma or mass casualty training program
- Durable and versatile
- Overlay allows for rapid modifications depending on the scenario demonstrated and whether or not the wound is made to bleed
- Simple system allows for easy setup and will not come off during extraction training
- Check change out the existing overlay on your SMART STAT link in the bleeding system and, in seconds, change up your presentation
- Excellent way to build out your advanced ALS level training with medics, paramedics, and other medical professionals interested in taking trauma management beyond the basics by combining the advanced features of SMART STAT with an enhanced, easy-to-use trauma upgrade



Tel. (787) 786-4212 | 4425 | 4488



1756 Ave. Fernández Juncos, San Juan P.R. 00909



[www.betancespse.com](http://www.betancespse.com)

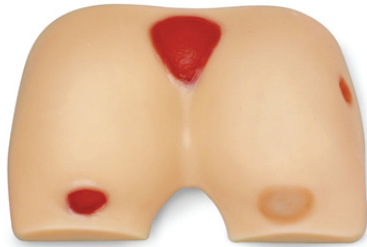


[/betancesprofessional](https://www.facebook.com/betancesprofessional)



[dp@betancespse.com](mailto:dp@betancespse.com)

Código  
**BPSN4941U**



## Bedsore Cleansing and Dressing Model

Descripción:

The varying stages of pressure sores on this unique model can be washed, treated with antiseptics or most medicines, and dressed...just like real flesh. Made from BIOLIKE2™ synthetic tissue. Comes with an aluminum carrying case and draping sheet. 14-1/2" x 9-1/2" x 3-1/2".

Código  
**BPSN6505U**



## Stan' Stage IV Pressure Ulcer Model™ Bedsore

Descripción:

Designed for teaching and training with vacuum assisted closure and negative pressure wound therapy devices, this model features a large sacral Stage IV pressure ulcer, with exposed bone of the coccyx, undermining, tunneling, slough, eschar, and a Stage III pressure ulcer on the left buttocks. The large size and depth of the Stage IV pressure ulcer, as well as the undermining and tunneling, make it ideal for practicing the proper dressing and preparation of a large wound for use with a negative pressure wound therapy device. The Stage III pressure ulcer is positioned so that the Stage IV can be dressed by itself or a "bridging" dressing can be applied to the Stage IV and Stage III to demonstrate and practice this skill. Permits the application and removal of dressings without leaving an adhesive residue. Measures 9" x 9" x 4-1/2".

Código  
**BPSN0906U**



## Life/form® Ostomy Care Simulator

Descripción:

Designed to help introduce the essentials of ostomy care to patients and students, this unit is ideal for demonstration and practice for several procedures. The anatomy of both a colostomy and ileostomy are carefully reproduced to provide lifelike functions and appearance. Dilatation of the stomas can be demonstrated and practiced, along with application of postoperative and permanent ostomy bags. The colostomy can actually be irrigated. Syringes are included to pump materials through the unit to provide drainage and excretion at the ileostomy and colostomy. The syringes are inserted through ports in the back of the simulator. One pumps the ileostomy with clear water, or water tinted for exact realism, and the other syringe pumps synthetic stool to the colostomy. The consistency of the stool can be varied by using water to thin the material, and most of the stool can be salvaged and reused. A soft, pliable material is used for the stomas in order to achieve a most realistic tactile sensation. Complete with a hard carry case, teaching guide, and supply of simulated stool. Five-year warranty. Size: 18" x 18" x 12".

Código  
**BPSN1235U**



## Life/form® Advanced Pelvic Examination and Gynecological Simulator

### Descripción:

Now in one completely redesigned unit, the Life/form® Advanced Pelvic Examination and Gynecological Simulator is ideal for all aspects of gynecological education, training, and competency evaluation, including the bimanual exam, speculum exam, and cytology sampling. Students will appreciate the unprecedented realism of its internal and external features; while instructors will love the interchangeable components that make up its unique modular system. You choose the scenarios you want to teach! Components can be combined in a multitude of ways. This simulator allows you the flexibility of customizing your scenarios with use of included makeup, blood, and thickener. Additional specialized modules are also available (STD, post-menopause, S.A.N.E., and pre-puberty). Starter unit includes torso, normal genital pad, normal pelvic organ block with vagina and rectum, abdominal gel pad, fabric abdominal pad, abdominal overlay skin, seven uterus/cervix pieces (normal/normal with discharge option, retroverted/cervicitis, cancer/cancer, transparent IUD trainer, post-menopause/herpes, fibroids/polyp, early pregnancy), five detachable ovaries (normal, polycystic, small cyst, large adnexal mass), bladder insert, pelvic organ prolapse insert, baby powder, Injury Shades Makeup Wheel (LF00760U), Primary Colors Makeup Wheel (LF00761U), blood mix, hydroxyethyl cellulose thickener, syringe, lubricant, instruction manual, and hard carry case. Completely washable, disassembles for easy cleaning. Five-year warranty.

Código  
**BPSN1012U**



## Life/form® Heart Catheterization Simulator for Total Parenteral Nutrition (TPN) and Central Venous Catheterization

### Descripción:

Now you can train residents and staff in the techniques of performing central venous catheterization using the Life/form®TPN Simulator. All appropriate landmarks are palpable for realistic identification of insertion sites. Synthetic skin may be removed from shoulder to reveal dissected musculature and location of veins, arteries, and other landmarks. With the skin in place, you can actually insert the needle introducer. The tactile sensation is dramatically realistic. Artificial blood is connected to provide confirmation of proper needle location when "blood" flows from needle, just like the real thing! Venous catheters can be snaked into place once the introducer is properly inserted. Use of a Swan-Ganz catheter is possible. Skin and veins will stand up to repeated puncture to allow training by dozens of staff members. The Life/form® skin and veins are easily replaced once worn. Also practice proper care of the puncture site and parenteral administration of fluids. Practice measuring central venous pressure. Bandaging techniques can be practiced with no fear of infection or other harm to a patient. In emergency medical training programs, practice delivery of large volumes of fluids in trauma. Inject for swift action as required for cardiac life support procedures. Includes fluid supply bags, replaceable skin, tubing sealant, needles, one quart of Life/form® blood, and teaching guide in a hard carry case. Fluid supply stand not included. Five-year warranty. Size: 28" x 17" x 10".

Código  
**BPSN0979U**



## Puerperal Skin

Descripción:  
Includes uterus recession model fixation base.

Código  
**BPSN0698U**



## Life/form® Adult Venipuncture and Injection Training Arm - Light

Descripción:

- Life/form® Realism
- Realistic Flashback
- Replaceable Skins
- Intramuscular Injection Site
- Complete with Fingerprints

Simple and easy to use, Life/form® Venipuncture and Injection Training Arms are the ideal way to teach venipuncture and injection techniques including starting IVs and introducing Over the Needle IV catheters. This simulator ends your problem of finding willing volunteers, and helps to avoid patient injury and liability while the students are learning new procedures. Realism begins with fine detail - right down to the fingerprints. But most important is the realistic feeling of puncture through the vinyl skin and latex veins. The skin actually rolls as you palpate the vein and the characteristic "pop" can be felt as the needle penetrates the vein. Veins are accessible at the antecubital fossa, along the forearm, and at the back of the hand, making it possible to practice venipuncture at any of the common sites. Practice of intramuscular injection is equally realistic. A foam pad simulates muscle tissue, and the boundaries are identified by natural bonelike landmarks. Life/form® Venipuncture and Injection Arms are designed with replaceable skins and veins. Complete replacement skin kits are available and easy to use. To extend the life of each skin/vein set, an aerosol sealant is available to seal punctures in the tubing and prevent leakage. Includes a Life/form® arm with skin, 22 gauge needle, butterfly set, infusion set, 3 cc syringe, 12 cc syringe, one pint Life/form® blood, fluid supply bags, instruction manual, and hard carry case. Fluid supply stand not included. Five-year warranty. Size: 35" x 12" x 6". CAUTION: Use only Life/form® Replacements. Do not use Conventional Latex Tubing. This will cause malfunction of the simulator.



Tel. (787) 786-4212 | 4425 | 4488



1756 Ave. Fernández Juncos, San Juan P.R. 00909



[www.betancespse.com](http://www.betancespse.com)



[/betancesprofessional](https://www.facebook.com/betancesprofessional)



[dp@betancespse.com](mailto:dp@betancespse.com)



Código  
**BPSN0706U**



## Life/form® Complete IV Arm and Pump Set

Descripción:

A complete set of IV arm simulators for blood collections, intravenous injection, and infusion. The arms are designed to allow training in real clinical settings, with delicate needle-tip resistance and “flashback” confirmation. Simulators feature soft material with realistic tactile feeling and offer true-to-life needle-tip resistance. The circulation pump offers leak-free connections with easy setup and maintenance. Comes complete with the Life/form® Adult Injectable Training Arm (LF00698U), Life/form® Pediatric Arm (LF00958U), Life/form® Infant IV Arm (LF03637U), three pint bottles with simulated blood powder, six fluid supply bags, three 3 cc syringes, two butterfly sets, two 22-gauge needles, six white towelettes, four clamps, 12 cc luer lock syringe, 25-gauge infusion set, IV arm circulation pump, power adapter, battery power adapter, tubing assembly, pump tube replacement, and tubing adapters.

Código  
**BPSN2017U**



## Infant IV Arm

Descripción:

Lifelike reproduction of an infant arm for mastering extremity venipuncture procedures and fluid administration in the superficial veins of the hand. Venipuncture possible in antecubital fossa and dorsum of the hand. Fluid may be infused for realistic flashback.

Código  
**BPSN0958U**



## Life/form® Pediatric Arm – Light

- Practice venipuncture and intramuscular injection techniques and procedures used in young children
- Exact reproduction of the arm of a six-year-old child.

This model provides realistic sensation and response. The lifelike vinyl skin actually rolls as you palpate to allow location of the vein. The synthetic rubber tubing for the veins was carefully selected to provide a lifelike simulation of vein size, and feeling of puncture and palpation for practicing venipuncture. A soft foam is used to simulate the deltoid muscle and allows the student to get the feel of administering intramuscular injections to children. Simulated bone in the shoulder defines and limits the injection area. Water may be used as an injection fluid in the shoulder area. Includes a Life/form® Arm with white skin, fluid supply bag, 3 cc syringe, one pint Life/form® blood, teaching guide, and hard carry case. Fluid supply stand not included. Five-year warranty. Carton size: 22 in. x 11 in. x 6 in.

The Life/form® Pediatric Injectable Arm Simulator is designed with replaceable skin and veins. Replacement kits are available and easy to use. To extend the life of each skin/vein set, an aerosol sealant is available (LF01099U) to seal punctures in the tubing and prevent leakage.



Tel. (787) 786-4212 | 4425 | 4488



1756 Ave. Fernández Juncos, San Juan P.R. 00909



[www.betancespse.com](http://www.betancespse.com)



[/betancesprofessional](https://www.facebook.com/betancesprofessional)



[dp@betancespse.com](mailto:dp@betancespse.com)



Código  
**BPSN1008UG**



## Life/form® Intradermal Injection Simulator - Light

### Descripción:

Now your students can practice intradermal injections safely and conveniently with the Life/form® Intradermal Injection Simulator. The unit consists of a casting molded from a real forearm from the wrist to just below the elbow. New Life/form® soft vinyl skin provides realistic feel and appearance to ensure a realistic training experience. The arm features eight sites for practicing intracutaneous injections. If fluid is properly injected, a characteristic skin welt will form. The welt is removed by withdrawing the fluid after practice. Each site is reusable by dozens of students. Includes arm section with eight injection sites, 2 oz. bottle of liquid skin repair, syringe, teaching guide, and storage box. The included liquid skin repair (LF01009UG) will extend the life of skin; however, skin is not replaceable and the simulator will eventually need replacement. Five-year warranty. Size: 13" x 11" x 5".

Código  
**BPSN1839UG**



## Paddy - Small Injection Pad

### Descripción:

- Use to simulate intradermal, intramuscular, and subcutaneous injections
- Removable epidermis layer on pad surface allows for the simulation of a "wheal" during intradermal injections
- Skin puncture resistance and the resistance throughout the injection closely mimic the feel of a real injection
- Drainage holes on pad bottom for use with fluid-filled syringes
- 2-1/2" L x 2-1/2" W x 1-3/4" H

Código  
**BPSN0228UG**



## Intramuscular Injection Simulator

### Descripción:

This high-quality simulator represents a right upper arm with all important anatomical palpable landmarks such as the acromion and humerus. It allows practicing correct intramuscular and subcutaneous injections in an exceptionally graphic way. The built-in fine electronics produce audio-visual feedback of the result, e.g. correct or incorrect injection, bone contact, or wrong localization. Additional trainings and control modes optionally provide an immediate or subsequent performance check under training conditions. The included lifelike silicone skin is extremely durable and can be quickly and easily exchanged when necessary. The simulator is supplied with two "AA" batteries, a detailed instruction manual, replacement skin, 5 ml syringe, and a 21G/0.8 injection needle.

The Life/form® Pediatric Injectable Arm Simulator is designed with replaceable skin and veins. Replacement kits are available and easy to use. To extend the life of each skin/vein set, an aerosol sealant is available (LF01099U) to seal punctures in the tubing and prevent leakage.



Tel. (787) 786-4212 | 4425 | 4488



1756 Ave. Fernández Juncos, San Juan P.R. 00909



[www.betancespse.com](http://www.betancespse.com)



[/betancesprofessional](https://www.facebook.com/betancesprofessional)



[dp@betancespse.com](mailto:dp@betancespse.com)

Código  
**BPSN0177UG**

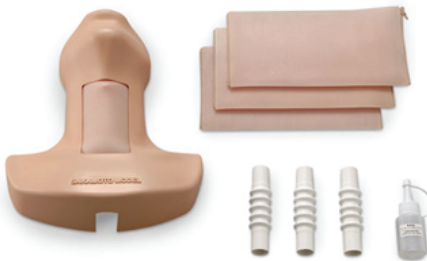


## Buttock Injection Simulator

### Descripción:

This strap-on, intramuscular simulator is a lifelike model of a right buttock with all the important anatomical landmarks for intramuscular (IM) injections: iliac crest, anterior superior iliac spine, and greater trochanter. The integrated fine electronics provide extremely graphic feedback when training the intramuscular injection technique, correctly administered injections will produce audiovisual feedback. Additional training and control modes are available for checking results either immediately or upon completion of a training session. This anatomically realistic injection simulator is supplied with a 21-gauge (0.8 mm) injection needle and a 5 ml syringe. Dimensions: 11-3/4" x 11-3/4" x 4-3/4".

Código  
**BPSN5067UG**



## Tracheotomy Trainer

### Descripción:



A practical trainer for various methods of tracheotomy. Training of both conventional and percutaneous tracheotomy and puncture/incision into the cricothyroid ligament is available. For conventional tracheotomy, different types of incisions can be performed including longitudinal, transverse, crucial, U-shaped, and inverted U-shaped. Simulating a patient in a supine position with the neck extended, the tracheotomy trainer allows the user to determine the proper incision site while identifying arterial locations, and to observe intratracheal conditions from the head. The trachea can be reused by turning it upside down or inside out, and the skin by sliding it to either side or turning it upside down. Contents: main body, neck (with arteries), thyroid cartilage (with cricoid cartilage), trachea (four pieces), skin (four sheets), and lubricant (silicon oil).








# BETANCES

Professional Services and Equipment, Inc.

 Tel. (787) 786-4212 | 4425 | 4488  1756 Ave. Fernández Juncos, San Juan P.R. 00909

 [www.betancespse.com](http://www.betancespse.com)  [/betancesprofessional](https://www.facebook.com/betancesprofessional)  [dp@betancespse.com](mailto:dp@betancespse.com)